



**FRONTIERS
NORTH**
ADVENTURES

Churchill Adventure Travel Guide
Find True North

Certified



Corporation

Navigation Guide

Welcome to the Churchill Adventure Travel Guide. Simply scroll through the pages of this guide or click on the navigation bar to go to sections of this digital document. For optimal viewing, here are a few things to consider.

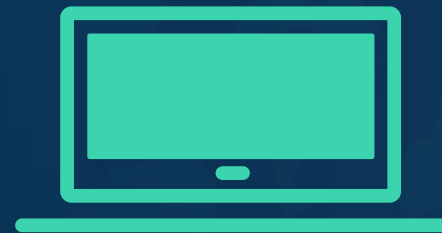
NAVIGATION BAR

At any point during your journey simply click or tap on any the seasons at the bottom of the page on and you will jump to that particular season. To head back to the Table of Contents click or tap on Table of Contents.

Compatible Viewing Devices

COMPUTER OR LAPTOP

A computer or laptop will provide the best viewing experience of the Churchill Adventure Travel Guide.



MOBILE OR TABLET

For optimal viewing experience on your mobile phone or tablet device, rotate your phone or device horizontally.



ZOOMING IN AND OUT ON MOBILE & TABLET

Zoom in: Touch two fingers to the screen and spread your fingers apart.

Zoom out: Touch two fingers to the screen and pull your fingers together.



We begin

by acknowledging that the land on which we host our tours is located on Treaty 5 Territory, the traditional lands of the Cree, Dene, Inuit, and the homeland of the Métis Nation. We honour their stewardship of this land, their cultures and their traditions.

We recognize that these lands were the site of significant historical and contemporary events, including the fur trade, exploration, colonization and the ongoing legacy of residential schools. We commit to working towards reconciliation and building meaningful relationships with the Indigenous communities of this region.

As we explore the natural wonders and cultural richness of Churchill and its surroundings, we remain mindful of our responsibility to care for this land and to uphold the principles of respect, reciprocity and reconciliation.



Table of Contents

GET TO KNOW US

- Northern Highlights 05
- Our Purpose: Who We Are 06
- Our Purpose: Leaders In Tourism..... 07
- Our Destinations: Where We Travel..... 08
- Going Electric In The Subarctic 09
- Sharing Polar Bears With The World 10
- Working With Polar Bears International..... 11

FIND YOUR INSPIRATION

- What Is The Tundra Buggy Lodge12
- Staying At The Tundra Buggy Lodge13
- Staying In Town: Visiting Churchill 14
- Dan’s Diner Culinary Experience 15
- Choose Your Own Adventure..... 16
- Group Adventures: Custom Itineraries17
- Churchill Travel Seasons 18

OUR ADVENTURES

WINTER: NORTHERN LIGHTS 19

- Northern Lights And Winter Nights 21
- Northern Lights And Winter Nights By Train22
- Photo Adventure: Northern Lights.....23

SUMMER: BELUGA WHALES 24

- Belugas, Bears, And Blooms.....26
- Belugas, Bears, And Blooms By Train.....27
- Photo Adventure: Beluga Whales In Churchill 28
- Conservation Journey®: Beluga Whales29
- Canada’s Big Five Safari 30

AUTUMN: POLAR BEARS 31

STAYING IN CHURCHILL

- Classic Churchill Polar Bear Adventure.....33
- Classic Churchill Polar Bear Adventure By Train ... 34
- Subarctic Discovery: Churchill Polar Bears35

STAYING AT THE TUNDRA BUGGY LODGE

- Tundra Buggy Lodge: Polar Bears 36
- Tundra Buggy Lodge: Town & Polar Bears.....37
- Photo Adventure: Tundra Buggy Lodge 38
- Conservation Journey®: Polar Bears39



Northern Highlights



* GEAR-UP WITH NORTHERN LIGHTS WINTER TOURS

Beginning in 2026, guests can enjoy an elevated winter experience beneath the aurora borealis with complimentary premium winter gear included on all of our winter tours. Churchill's clear crisp winter nights are best savoured in complete comfort, and our guests will be outfitted in top-of-the-line cold-weather gear, including Canada Goose parkas and snow pants paired with Baffin boots—ensuring warmth, style, and ease in even the most extreme conditions.



* BELUGA WHALE KAYAKING SUMMER TOURS

We're making a splash in 2026, and are thrilled to introduce kayaking for most of our beluga whale summer adventures. Glide silently across the water and paddle alongside these curious cetaceans and experience unforgettable up-close encounters. Belugas often approach kayakers with gentle curiosity—sometimes surfacing just beside you, blowing bubbles or circling back for another look. This immersive experience offers a rare and intimate wildlife experience.



Frontiers North Adventures President and Co-Owner Lisa-Joy Gunter and Polar Bears International Executive Director Krista Wright unveil the new EV Tundra Buggy One.

* NEW EV TUNDRA BUGGY ONE UPGRADE

In October 2025, Frontiers North Adventures and Polar Bears International, in collaboration with Noble Northern, unveiled an all-new, ground-up build: EV Tundra Buggy One. Designed as a mobile broadcast studio, it shares live polar bear experiences with audiences around the world.

EV Tundra Buggy One is now better equipped to provide a more sustainable and technologically advanced way to roam the tundra while live streaming polar bears in their natural habitat.

Our Purpose WHO WE ARE

We are a Certified B Corporation™ and internationally recognized leader in authentic and sustainable adventures in Canada's North. Family-owned and operated since 1987, Frontiers North Adventures hosts guests to dine beneath the northern lights, splash alongside beluga whales, and lock eyes with wild polar bears primarily in and around the subarctic community of Churchill, Manitoba.

We are the official Conservation Journey®, and Tundra Buggy® people, and work hard to benefit our guests and employees, the ecosystems, and communities in which we operate, and passionately share those values with our guests.

Our programs are meaningfully designed for wildlife and culture enthusiasts, photographers, and experiential adventure travellers.

We are committed to authentic and transformative travel experiences, and the shared sustainable stewardship of the communities where we host our guests.

Our Purpose

LEADERS IN TOURISM

We are an award-winning and internationally known tourism leader in Canada's eco-tourism industry, and have been recognized by the Tourism Industry Association of Canada as one of the top three sustainable tourism operators in Canada. We are proud that our Frontiers North Tundra Buggy Adventure was hailed as a quintessential Canadian tourism experience by Destination Canada, and was awarded Signature Experience status.

© Alex Cupeiro

PASSIONATE AND PROFESSIONAL GUIDES

Our world-class guides and drivers offer a wealth of knowledge and experience. Chosen for their expertise, our enthusiastic and engaging team will make sure you leave having had the adventure of a lifetime.

Duane Collins, is an Interpretive Guide who has been working with Frontiers North since 2018.

© Alex Cupeiro

CONSERVATION AND SUSTAINABILITY

Our commitment to sustainability starts with a deep appreciation of the fragile environments in which we operate, and our good fortune in being afforded rare access to special places we can share it with our guests. Our approach to social responsibility involves three core areas: Environmental Stewardship, Caring for People and Community Involvement.

[Learn more about our Impact here.](#)

© Abby Matheson

PARTNERS AND SUPPLIERS

Our purchasing policy ensures we source local, and work with Indigenous vendors and suppliers that support social and environmental responsibility.

Dave Daley owns and operates Original-accredited, Wapusk Adventures, running dog sled programs that educate our guests about the Métis culture and life in Churchill, Manitoba.

SUPPORT AND DONATIONS

We donate 3.3% of our net profits through cash donations.

Certified
B
Corporation

Our Destinations

WHERE WE TRAVEL

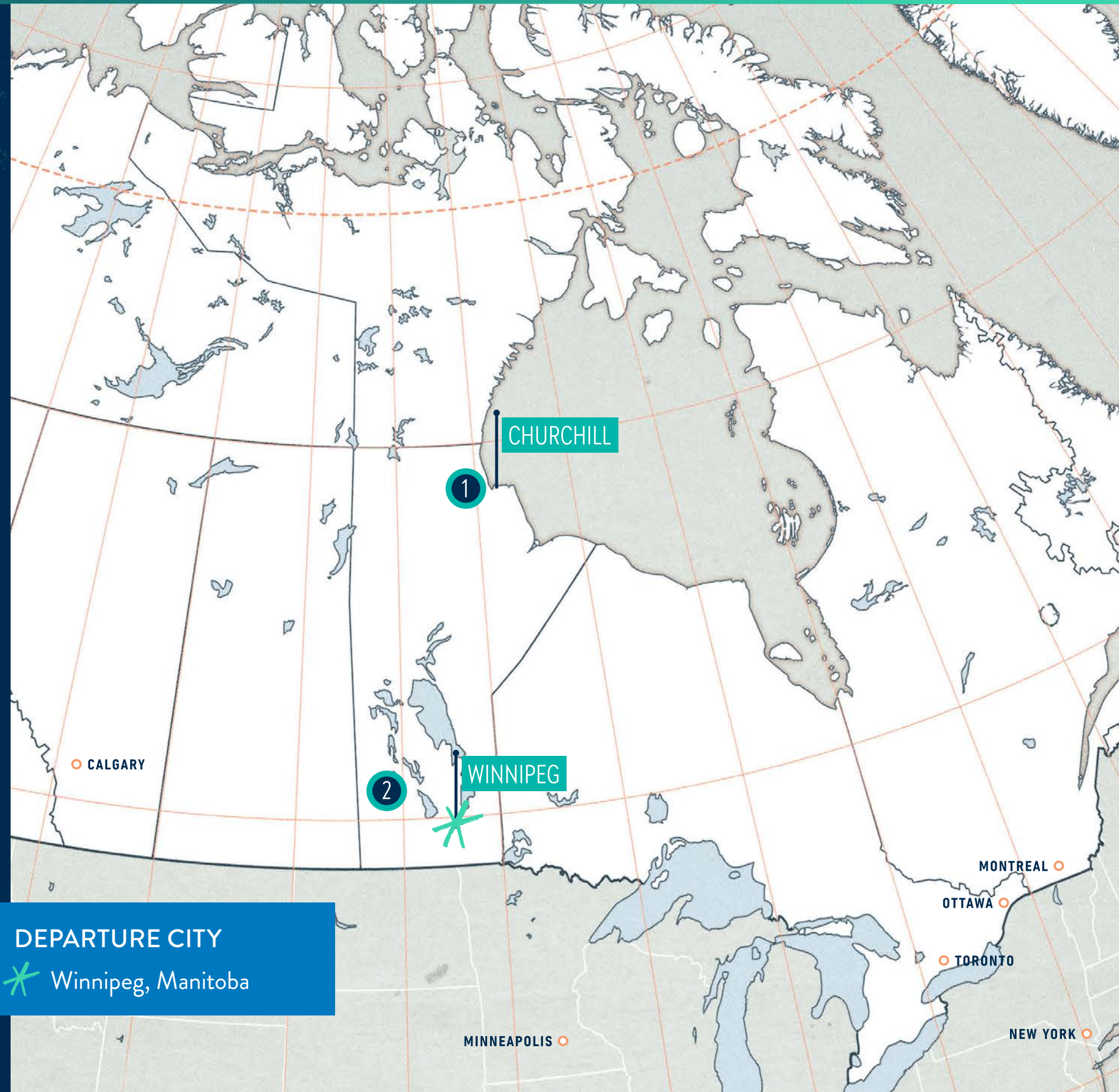
With over 35 years of experience leading wilderness adventures in Canada's North, we take pride in the places we share with our guests. Allow us to host you in these extraordinary settings of stunning landscapes where wildlife, culture, and history come alive.

1 CHURCHILL WILDLIFE MANAGEMENT AREA

Situated along the coast of the Hudson Bay, the Churchill Wildlife Management Area (CWMA) is at the intersection of three distinct eco-zones: arctic marine, subarctic tundra, and boreal forest. Hop aboard an official Tundra Buggy as you explore the vast subarctic landscape for wildlife within the CWMA; including the site of our Tundra Buggy Lodge, located at Polar Bear Point, and in the heart of the CWMA.

2 RIDING MOUNTAIN NATIONAL PARK

Experience a wide selection of astonishing scenery when you visit Riding Mountain National Park. This diverse park is home to rolling hills, lush meadows, pristine lakes and sprawling boreal forest that attract various wildlife to this magical setting. Here you can enjoy the grazing bison at the Lake Audy Bison Enclosure while also exploring the area in search of local wildlife; such as black bears, moose and many other iconic Manitoban species.



DEPARTURE CITY

* Winnipeg, Manitoba



Going Electric IN THE SUBARCTIC

In 2021, Frontiers North Adventures introduced its first Electric Vehicle (EV) Tundra Buggy®, a new zero-emission initiative.

As the first of its kind, we are pioneering the way for future EV technologies. The EV Tundra Buggy® is a success story demonstrating that Electric Vehicle technology is more than capable of handling the heavy machinery operating challenges in remote Northern climates. Designed specifically for the tundra landscape, these all-terrain vehicles allow us to take guests to Churchill's top locations.

Using a network of established trails in the Churchill Wildlife Management Area, our guests can safely experience wildlife in the heart of polar bear country during summer and autumn. In the winter, our guests are taken to remote locations to view the northern lights across the frozen Churchill River such as Thanadelthur Lounge and Dan's Diner where they can enjoy a seven-course gourmet dinner and watch the aurora borealis dance above.

THE BENEFITS OF GOING ELECTRIC FOR OUR GUESTS AND WILDLIFE

* SILENT VIEWING EXPERIENCE

- Reduces noise pollution offering guests and wildlife a silent viewing experience.
- Hear the sounds of the animals, and their guides' interpretations without background noise.
- A dual benefit both guests and wildlife.

* WINTERIZED PERFORMANCE

- Operates in -35°C (-30°F) temperatures and below.
- Reliability and superior performance in extreme cold comparable to diesel engines.
- 75 km (46 mi) is the average range on an EV Tundra Buggy® when fully charged.

* RENEWABLE ENERGY SOURCE

- Charged using hydroelectric power (a renewable source of energy) produced locally in Manitoba.
- Hydro power produces significantly less emissions than other conventional sources of energy.
- From completely empty it would take 12.5 hours to charge an EV Tundra Buggy®.

* ALL-SEASON OPERATIONS

- Winter—Northern Lights.
- Summer—Beluga Whales.
- Autumn—Polar Bears.

Sharing Polar Bears WITH THE WORLD

* EV TUNDRA BUGGY ONE

EV Tundra Buggy One is a mobile broadcast and research centre we created exclusively for Polar Bears International's use. EV Tundra Buggy One is outfitted with tools and equipment that enable polar bear scientists to study bears and broadcast live webcasts and video from the remote tundra, sharing up-to-date information on Churchill's polar bears with audiences around the world.

* TUNDRA CONNECTIONS®

Every fall during the polar bear migration in Churchill, Polar Bears International conducts live free broadcasts, webcasts, and live chats from EV Tundra Buggy One. Each week focuses on a different theme, tapping into the expertise of guest panelists. Viewers are able to see wild polar bears, meet experts, ask questions, and receive answers in real time.

* FIELD AMBASSADOR PROGRAM

Each year, the Polar Bears International Field Ambassador program selects polar bear biologists and zoo professionals to join their team in Churchill. These volunteers donate two weeks each year for two years, and are on board roughly 46 Tundra Buggy tours each year to share their knowledge about polar bears and climate change with tourists.

POLAR BEARS INTERNATIONAL HOUSE

Located in Churchill, the Polar Bear Capital of the World, Polar Bears International House is an interpretive centre focused on polar bears and polar bear research aiming to help visitors learn about polar bears, loss of sea ice, and the urgent need to take action. It serves as a gathering place for the Churchill community and a hub for visiting scientists, educators, and special guests whose outreach work and support are critical to polar bear conservation.

[Learn more about our alliance with Polar Bears International here.](#)

Working With POLAR BEARS INTERNATIONAL®



We bring guests to incredible corners of Canada’s North so they can experience firsthand the history, culture, and wildlife of a part of the world that not many people have the chance to see. We take responsibility to not only ensure we are travelling sustainably in these fragile ecosystems, but also to inspire and educate people around the world to be passionate about the North and everyone—and everything—that lives here. It is this responsibility that has fuelled our partnership with Polar Bears International.

Polar Bears International is the world’s leading polar bear conservation group, dedicated to sustaining a future for saving polar bears across the Arctic. Since 2001, Frontiers North has been a Platinum sponsor of Polar Bears International and through this partnership we have collaborated on a number of projects intended to inspire people all over the globe.

“Polar Bears International” is a registered trademark of Polar Bears International, Inc.

503,000

Social media followers of Polar Bears International’s channels. Sharing field updates, expert Q&As, conservation videos, and action toolkits in 2024.

114,000

Individuals viewed live Tundra Connections webcasts in 2024, including classrooms (from early years to university), zoos, corporations and the public.

48

Frontiers North tours were joined by a Polar Bears International Field Ambassador in 2024.



1.7 Million

Views of polar bear content via live cams in 2024, including streams from Tundra Buggy One.

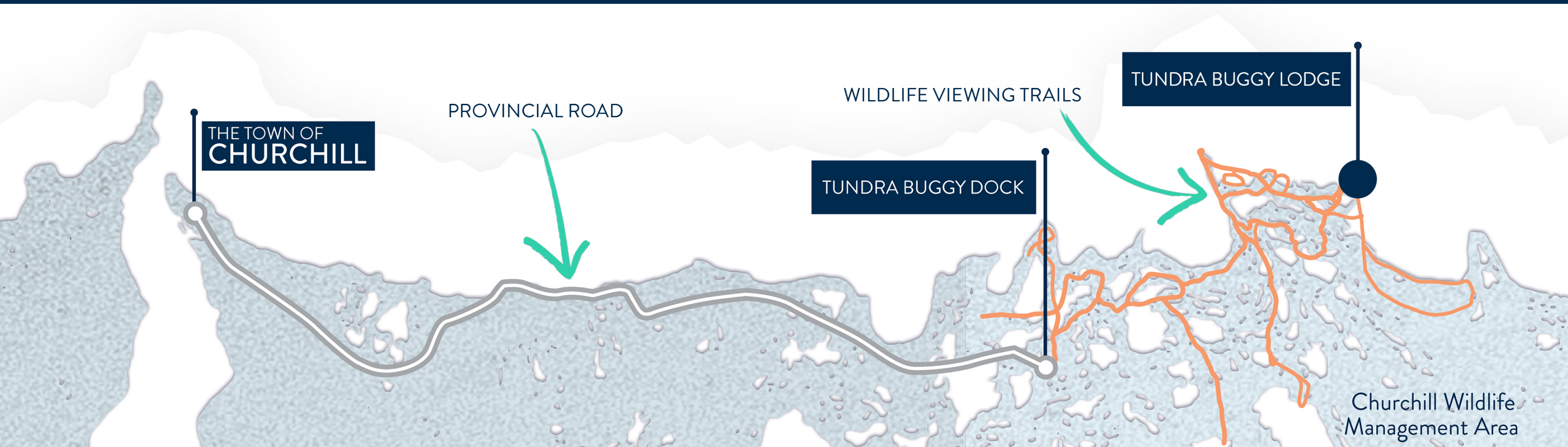


What is the TUNDRA BUGGY LODGE

A stay at the Tundra Buggy Lodge gives you the ultimate experience and most time viewing polar bears. Remotely located on the tundra far from Churchill, you save time commuting from the town and more time immersed in the subarctic watching wildlife.

TUNDRA BUGGY LODGE FACTS

- The Tundra Buggy Lodge is located on the tundra in the Churchill Wildlife Management Area.
- We are one of two companies with permits to allow this unique accommodation on the tundra.
- Staying here gives you full 8-hour days maximizing your polar bear viewing opportunities.
- Eliminate daily commuting from the town of Churchill to Churchill Wildlife Management Area.
- You gain two extra hours of wildlife viewing every single day compared to a town-based tour.





© Alex Cupeiro



© Paul Janask



© Kelly Krueger



© Frontiers North Adventures



© Mike Gere



© Alex Cupeiro

Staying at the TUNDRA BUGGY LODGE

Join us during autumn and stay where polar bears roam and many other subarctic wildlife call home. From breathtaking northern lights to fine dining and presentations by Polar Bears International, enjoy this full tundra experience and deep dive into the heart of polar bear country.

WHY CHOOSE A LODGE-BASED ADVENTURE

- Wake up to vast tundra landscapes and perhaps even seeing a polar bear directly outside of your window!
- Unlimited day and night polar bear viewing when you stay on the tundra where wild polar bears roam.
- Gain extra time and maximize your polar bear encounters by being the first on the tundra and the last to leave.
- Gourmet dinners and regionally inspired food using fresh local ingredients prepared by two Tundra Buggy Lodge chefs.
- Unique opportunities to engage with Polar Bears International field ambassadors and scientists.
- Multiple polar bear and northern lights viewing areas: open-air observation deck, panoramic windows, and immersive skylights.

Staying in Town

VISITING CHURCHILL

Known as the Polar Bear Capital of the World, staying in the town of Churchill offers a unique chance to experience a place where people and polar bears have learned to coexist.

While staying in town, you can enjoy the comfort of a private hotel room to kick back and relax after a busy day of adventures in Canada's North, explore the history and culture of Churchill's museums, see the beautiful murals that decorate the town, discover unique shops and local restaurants boasting delicious regionally inspired fare, or enjoy a beverage at the local pub—you may even hear a few interesting stories along the way.

UNIQUE NORTHERN CHARM ON TOWN-BASED TOURS

- Commute by Tundra Buggy to see wild polar bears on the tundra.
- Private hotel room to unwind after a full day of exploring.
- Explore murals and landmarks scattered throughout the town.
- Enjoy regionally inspired dishes in a warm restaurant atmosphere.
- Meet the locals and experience the charm of "Friendly Manitoba".
- Visit historic locations and learn about local history and culture.



Dan's Diner

CULINARY EXPERIENCE

Dan's Diner is an exclusive one-of-a-kind culinary experience remotely situated on the frozen banks of the Churchill River for Frontiers North guests. A feast for your eyes and taste buds awaits, travel across the frozen Churchill River and watch the northern lights dance above while you enjoy a seven-course meal inspired by local and regional ingredients, prepared by our skilled culinary team. This intimate setting with both indoor and outdoor aurora borealis viewing options is an included exclusive activity with all of our Winter Northern Lights Adventures during February and March.

* A UNIQUE DINNER UNDER THE NORTHERN LIGHTS

Seated in a converted Tundra Buggy featuring panoramic windows and overhead skylights, diners are able to view the Aurora Borealis while enjoying an exquisitely curated, multi-course menu featuring regional and local fare inspired by land and sea.

* DISHES WITH FRESH REGIONAL INGREDIENTS

The cuisine of Churchill is just as diverse as its landscape, incorporating tundra fare of wild game like bison and elk, fish such as pickerel and Arctic char, vegetables like leafy greens and potatoes, and Arctic berries. We incorporate Manitoba suppliers as much as we can.

* ENJOY A CUSTOM ICE BAR AND TUNDRA BONFIRE

At the end of the night, a bonfire along with a small ice bar is set up and everyone is encouraged to socialize and mingle over a glass of scotch or other hand-crafted cocktails, while sharing the experience of watching the spectacular light show overhead.



Choose YOUR OWN ADVENTURE

All of our tour packages include accommodations, and are built with your convenience in mind. We provide a professional Interpretive Guide and comprehensive itineraries to help guide you through your Churchill adventure, so that you can leave the details to us and focus on creating lasting memories you will cherish from your time with us.



© Alex Cupeiro

INTERPRETIVE GUIDED

These tours are our most well-rounded adventures and include lodging and transportation with a mix of cultural and wildlife-or northern lights viewing activities built into the itinerary. Professionally-led, these adventures allow you to sit back, relax, and enjoy your trip.

CONSERVATION JOURNEY®

Our Conservation Journeys® offer a strong focus on conservation, education, and immersive up-close wildlife encounters. Benefit exploring Churchill with an accomplished wildlife scientist and gain exclusive access to important research infrastructure. A portion of the proceeds from this trip supports important conservation programs and efforts.

PHOTO SPECIALIST

Led by a Photo Specialist guide, maximize your viewing time to capture the perfect image. These all-inclusive tours are longer in duration, include photography guidance and workshops, as well as an opportunity to connect with other fellow photographers and enthusiasts.



© Simon Gee



© Colby Spence



Corporation



Group Adventures

CUSTOM ITINERARIES

Groups of ten or more can create their own **custom group itineraries**—enabling groups to pick, choose, and cater to their own personal needs and likes. Additional customization includes catering, restaurants, fully equipped private meeting spaces, and unique accommodations.

* SPECIAL INTERESTS

Design a personalized itinerary specific to your group's interests, including customized adventure itineraries for a bespoke experience. We frequently work with accredited zoos and aquariums, study tours, conservation organizations, alumni associations, LGBTQ, photography groups, solo traveller groups, women's only groups and more.

* MEETINGS AND INCENTIVES

Host your next meeting with the scenic tundra as your setting, or reward your team for their incredible work. Frontiers North provides tailored itineraries with exclusive accommodations, fully equipped private meeting spaces and catering, so you and your team can focus on your work and enjoy yourselves.

* FAMILIES

Plan to celebrate your next milestone, anniversary, or reunion. The moments that bring togetherness and form everlasting memories, all designed with your family in mind. Leave the planning to our team and enjoy a stress free trip with your loved ones.

Churchill

TRAVEL SEASONS

You may know Churchill as the Polar Bear Capital of the World, but as the saying goes, great things come in threes!

This remote northern Canada community is also the Beluga Whale Capital of the World, and it is also one of the top locations to view the northern lights. The best times to see Churchill's incredible wildlife and northern lights varies by season:

- **February and March** have optimal conditions for seeing the northern lights illuminate the night sky.
- **July and August** are the prime months to see beluga whales frolicking in the Churchill River.
- **October and November** provide the ideal environment to see polar bears roaming the wild tundra.

Winter

- HIGH CHANCE
Northern Lights,
Snow/Ice
- SOMETIMES
Arctic Fox,
Arctic Hare
- NOT IN SEASON
Polar Bears,
Beluga Whales



Summer

- HIGH CHANCE
Beluga Whales,
Migratory Birds, Flora
- SOMETIMES
Polar Bears, Northern
Lights, Caribou
- NOT IN SEASON
Snow/Ice



Autumn

- HIGH CHANCE
Polar Bears, Arctic
Fox, Arctic Hare
- SOMETIMES
Northern Lights,
Snow/Ice
- NOT IN SEASON
Beluga Whales,
Migratory Birds,
Flora



Winter NORTHERN LIGHTS

TRAVEL MONTHS: FEBRUARY AND MARCH

| | |
|--|----|
| NORTHERN LIGHTS AND WINTER NIGHTS | 21 |
| NORTHERN LIGHTS AND WINTER NIGHTS BY TRAIN | 22 |
| PHOTO ADVENTURE: NORTHERN LIGHTS | 23 |



Winter IN CHURCHILL

Churchill is one of the best places on Earth to witness the awe-inspiring northern lights. Located directly beneath the auroral oval, long dark winter nights provide the perfect setting for aurora borealis viewing and photography.

Guests can enjoy winter outdoor activities such as dog sledding, fat biking or snowshoeing through the pristine boreal forest. Travel by Tundra Buggy in the evenings far away from the town of Churchill and enjoy a gourmet dinner at Dan's Diner our remote culinary experience, After dinner, watch the northern lights dance across the night sky comfortably from the panoramic views and skylights of Thanadelthur Lounge.

MEANINGFUL WINTER MOMENTS

- Cross the frozen Churchill River to secluded locations for northern lights viewing.
- Dog sledding, snowshoeing, or fat biking through the boreal forest.
- Enjoy a remote gourmet culinary experience under the northern lights at Dan's Diner.
- Explore one of Canada's finest Inuit art collections at the local Itsanitaq Museum.
- Witness the atmospheric optical phenomenon beauty of the sun dog or mock sun.





Northern Lights and Winter Nights

FEBRUARY - MARCH
INTERPRETIVE GUIDED

Our Northern Lights and Winter Nights adventure, is a comprehensive tour with three dedicated nights in Churchill. Led by an experienced Interpretive Guide, you have the opportunity to witness the aurora borealis, an incredible night sky phenomenon from the tundra. Beautiful northern landscapes will surround you as you travel across the frozen Churchill River to a new and secluded location each night for incredible viewing opportunities of the northern lights.

WHAT IS INCLUDED

Guide:

- An experienced interpretive guide

Accommodations:

- 2 nights at Winnipeg hotel
- 3 nights at Churchill hotel

Meals:

- All Meals: *B (4), L (4), D (5)*
- Additional refreshments throughout your adventure

Gratuities:

- All gratuities included

Premium Gear:

- Canada Goose Parka & Pants
- Baffin Boots

Wildlife/Permitting:

- Access to all viewing locations

Transportation:

- Round-trip airfare (*Winnipeg to Churchill*)
- All ground transportation

Group Size:

- Intimate groups of **up to 20** like-minded travellers

Itinerary Activities: Churchill & Area Tour, Cultural Presentation, Dan's Diner Culinary Experience, Dog Sledding, Forest Excursion, Itsanitaq Museum, Parks Canada Visitor Centre, Polar Bears International House, Snowshoe Trek, Thanadelthur Lounge, Tundra Buggy® Adventure.



DID YOU KNOW?

Dan's Diner is a remote culinary experience exclusively for Frontiers North guests situated on the frozen banks of the Churchill River.



Northern Lights and Winter Nights By Train

FEBRUARY - MARCH
INTERPRETIVE GUIDED

Our Northern Lights and Winter Nights by Train adventure, allows you to travel by train to Churchill and experience the beauty of Canada's northern landscapes and scenic journey of watching the prairies change to the tundra landscape. This adventure features iconic winter activities during the day, and three unforgettable nights of prime northern lights viewing opportunities directly beneath the auroral oval in Churchill, Manitoba.

WHAT IS INCLUDED

Guide:

- An experienced interpretive guide

Accommodations:

- 2 nights at Winnipeg hotel
- 2 nights on the Train
- 3 nights at Churchill hotel

Meals:

- All Meals: *B (4), L (4), D (5)*
- Additional refreshments throughout your adventure

Gratuities:

- All gratuities included

Premium Gear:

- Canada Goose Parka & Pants
- Baffin Boots

Wildlife/Permitting:

- Access to all viewing locations

Transportation:

- Round-trip airfare (*Winnipeg to Churchill*)
- All ground transportation

Group Size:

- Intimate groups of **up to 17** like-minded travellers

Itinerary Activities: Churchill & Area Tour, Cultural Presentation, Dan's Diner Culinary Experience, Dog Sledding, Forest Excursion, Itsanitaq Museum, Parks Canada Visitor Centre, Polar Bears International House, Snowshoe Trek, Thanadelthur Lounge, Tundra Buggy® Adventure.

DID YOU KNOW?

Taking the train to Churchill provides an additional two nights of potential aurora borealis viewing while on your way to Churchill.



Photo Adventure: Northern Lights

FEBRUARY - MARCH
PHOTO SPECIALIST GUIDED

This tour is led by a Photo Specialist to help you capture the stunning beauty of the northern lights, enhance your photography skills, and most importantly capture memorable moments from your trip. Regardless of your skill level or camera type, this tour provides you the chance to take the perfect photo of the beautiful aurora borealis with the help of our knowledgeable Photo Specialist Guides. Explore Churchill's rich history and culture and enjoy exclusive access to the Dan's Diner culinary experience, unique winter activities, and photograph a new secluded location each night.

WHAT IS INCLUDED

Guide:

- An experienced photo specialist guide

Accommodations:

- 2 nights at Winnipeg hotel
- 4 nights at Churchill hotel

Meals:

- All Meals: *B (4), L (4), D (5)*
- Additional refreshments throughout your adventure

Gratuities:

- All gratuities included

Premium Gear:

- Canada Goose Parka & Pants
- Baffin Boots

Wildlife/Permitting:

- Access to all viewing locations

Transportation:

- Round-trip airfare (*Winnipeg to Churchill*)
- All ground transportation

Group Size:

- Intimate groups of **up to 18** like-minded travellers

Itinerary Activities: Churchill & Area Photo Tour, Cultural Presentation, Dan's Diner Culinary Experience, Dog Sledding, Forest Excursion, Itsanitaq Museum, Parks Canada Visitor Centre, Photo Workshop, Polar Bears International House, Rocket Range, Snowshoe Trek, Thanadelthur Lounge, Tundra Buggy® Adventure.



DID YOU KNOW?

Our photo specialist guides are experienced Astral Photographers who will provide the support needed to capture an incredible shot.

Summer BELUGA WHALES

TRAVEL MONTHS: JULY AND AUGUST

| | |
|--------------------------------------|----|
| BELUGAS, BEARS, AND BLOOMS | 26 |
| BELUGAS, BEARS, AND BLOOMS BY TRAIN | 27 |
| PHOTO ADVENTURE: BELUGA WHALES | 28 |
| CONSERVATION JOURNEY®: BELUGA WHALES | 29 |
| CANADA'S BIG FIVE SAFARI | 30 |



Summer IN CHURCHILL

Churchill in the summer is a beautiful thing: beluga whales by the thousands, hundreds of migratory bird species, and a veritable rainbow of flowers in full bloom with the possibility of seeing polar bears.

Experience Churchill's beluga whales (also known as the Canaries of the Sea), by a guided boat or Zodiac tour. On land, visit the cultural museums, try the thrill of dog carting, and explore the colourful tundra flora and fauna landscape within the Churchill Wildlife Management Area on a Tundra Buggy®.

MEANINGFUL SUMMER MOMENTS

- Sing and splash alongside the friendly and curious beluga whales in Churchill River.
- Experience the thrill of dog carting through the boreal forest by a professional sled dog team.
- Witness the variety of flora and fauna, and hundreds of migratory birds and flowers.
- Learn about local indigenous cultures, the fur trade and the Hudson Bay Company at this historic site.
- Watch the glow of a beautiful sunset over the Hudson Bay in the evening.



Belugas, Bears, and Blooms

JULY - AUGUST
INTERPRETIVE GUIDED

Travel to the Beluga Whale Capital of the World and surround yourself with hundreds of curious beluga whales on this unique tour to Canada's North. This well-rounded beluga whale tour offers the chance to see thousands of beluga whales, many migratory birds, colourful blooms, and the first summer polar bears returning from the sea ice as you explore the Churchill Wildlife Management Area. While in town, learn about the history of Churchill and indulge in the culture by exploring cultural museums, unique shops, and local restaurants boasting delicious regional cuisine.

WHAT IS INCLUDED

Guide:

- An experienced interpretive guide

Accommodations:

- 2 nights at Winnipeg hotel
- 4 nights at Churchill hotel

Meals:

- All Meals: *B (4), L (4), D (5)*
- Additional refreshments throughout your adventure

Gratuities:

- All gratuities included

Transportation:

- Round-trip airfare (*Winnipeg to Churchill*)
- All ground transportation

Wildlife/Permitting:

- Access to all viewing locations

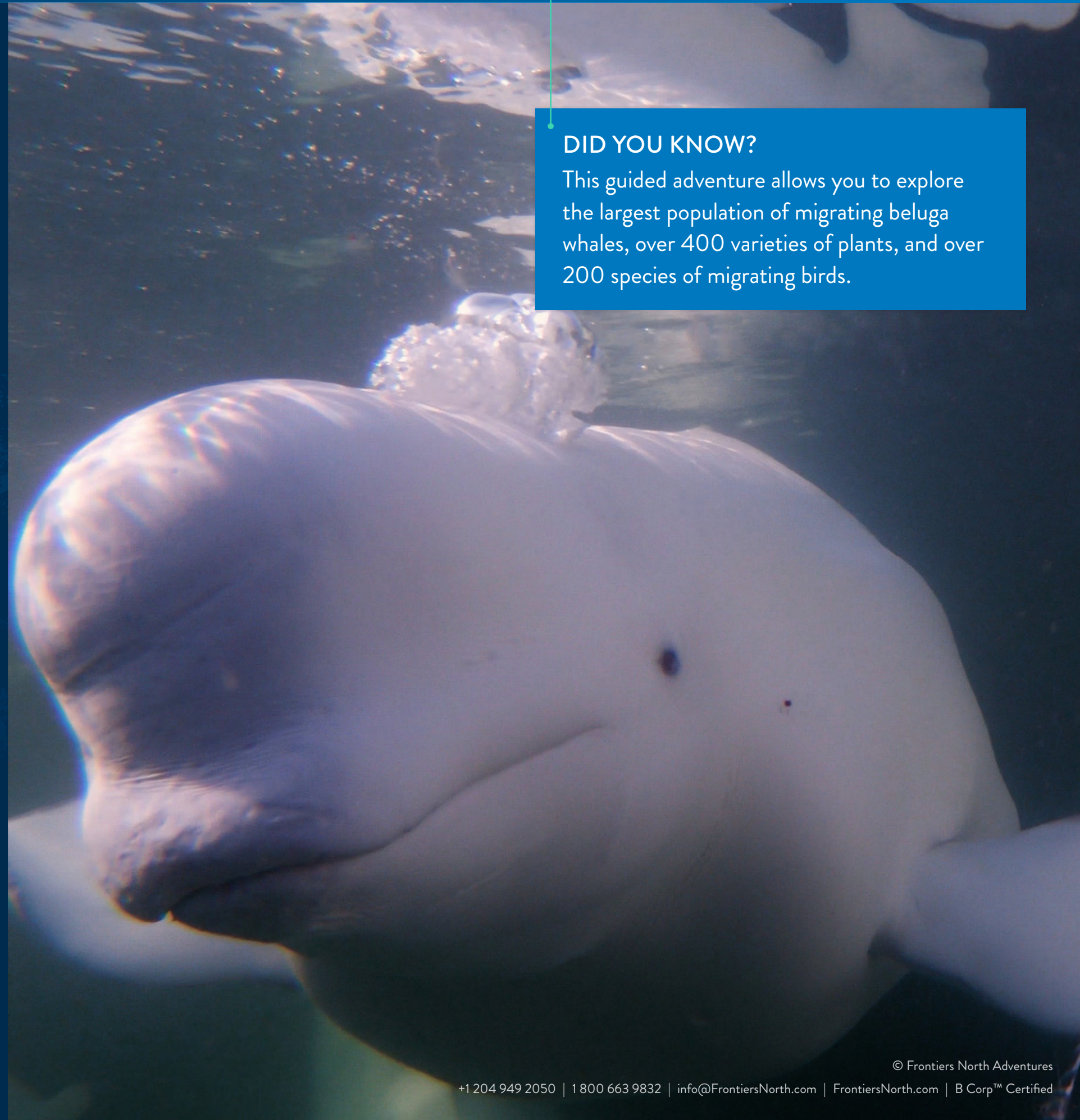
Group Size:

- Intimate groups of **up to 18** like-minded travellers

Itinerary Activities: Beluga & Fort Tour, Beluga Kayaking, Beluga Zodiac, Churchill & Area Tour, Cultural Presentation, Dog Carting, Itsanitaq Museum, Parks Canada Visitor Centre, Polar Bears International House, Tundra Buggy® Adventure.

DID YOU KNOW?

This guided adventure allows you to explore the largest population of migrating beluga whales, over 400 varieties of plants, and over 200 species of migrating birds.





Belugas, Bears, and Blooms by Train

JULY - AUGUST
INTERPRETIVE GUIDED

Journey north by train through untouched wilderness—an unforgettable adventure that begins the moment you board. This well-rounded beluga whale tour offers the chance to see thousands of beluga whales, migratory birds, colourful blooms, and the first summer polar bears returning from the sea ice as you explore the Churchill Wildlife Management Area. In town, learn about the history of Churchill and indulge in the culture by exploring cultural museums, unique shops, and local restaurants boasting delicious regional cuisine.

WHAT IS INCLUDED

Guide:

- An experienced interpretive guide

Accommodations:

- 2 nights at Winnipeg hotel
- 2 nights on the Train
- 4 nights at Churchill hotel

Meals:

- All Meals: *B* (4), *L* (4), *D* (5)
- Additional refreshments throughout your adventure

Gratuities:

- All gratuities included

Transportation:

- Round-trip airfare (*Winnipeg to Churchill*)
- All ground transportation

Wildlife/Permitting:

- Access to all viewing locations

Group Size:

- Intimate groups of **up to 18** like-minded travellers

Itinerary Activities: Beluga & Fort Tour, Beluga Kayaking, Beluga Zodiac, Churchill & Area Tour, Cultural Presentation, Dog Carting, Itsanitaq Museum, Parks Canada Visitor Centre, Polar Bears International House, Tundra Buggy® Adventure.



DID YOU KNOW?

Over 50,000 beluga whales migrate into Hudson Bay each summer—3,000 to 4,000 of which spend the season feeding and raising their young in the Churchill River estuary.



Photo Adventure: Beluga Whales in Churchill

JULY - AUGUST

PHOTO SPECIALIST GUIDED

This photography inspired Churchill summer trip allows you to capture and witness the vibrancy and excitement of summer in through the lens of your camera. Build your photography skills and take the perfect photo with guidance from our Photo Specialist Guides. Colourful floral blooms erupt on land with plentiful birding and wildlife viewing opportunities, on the water watch and listen to the curious beluga whales, but keep your eyes on shore for other wildlife—including the possibility of a summer polar bear.

WHAT IS INCLUDED

Guide:

- An experienced photo specialist guide

Accommodations:

- 2 nights at Winnipeg hotel
- 4 nights at Churchill hotel

Meals:

- All Meals: B (4), L (4), D (5)
- Additional refreshments throughout your adventure

Gratuities:

- All gratuities included

Transportation:

- Round-trip airfare (Winnipeg to Churchill)
- All ground transportation

Wildlife/Permitting:

- Access to all viewing locations

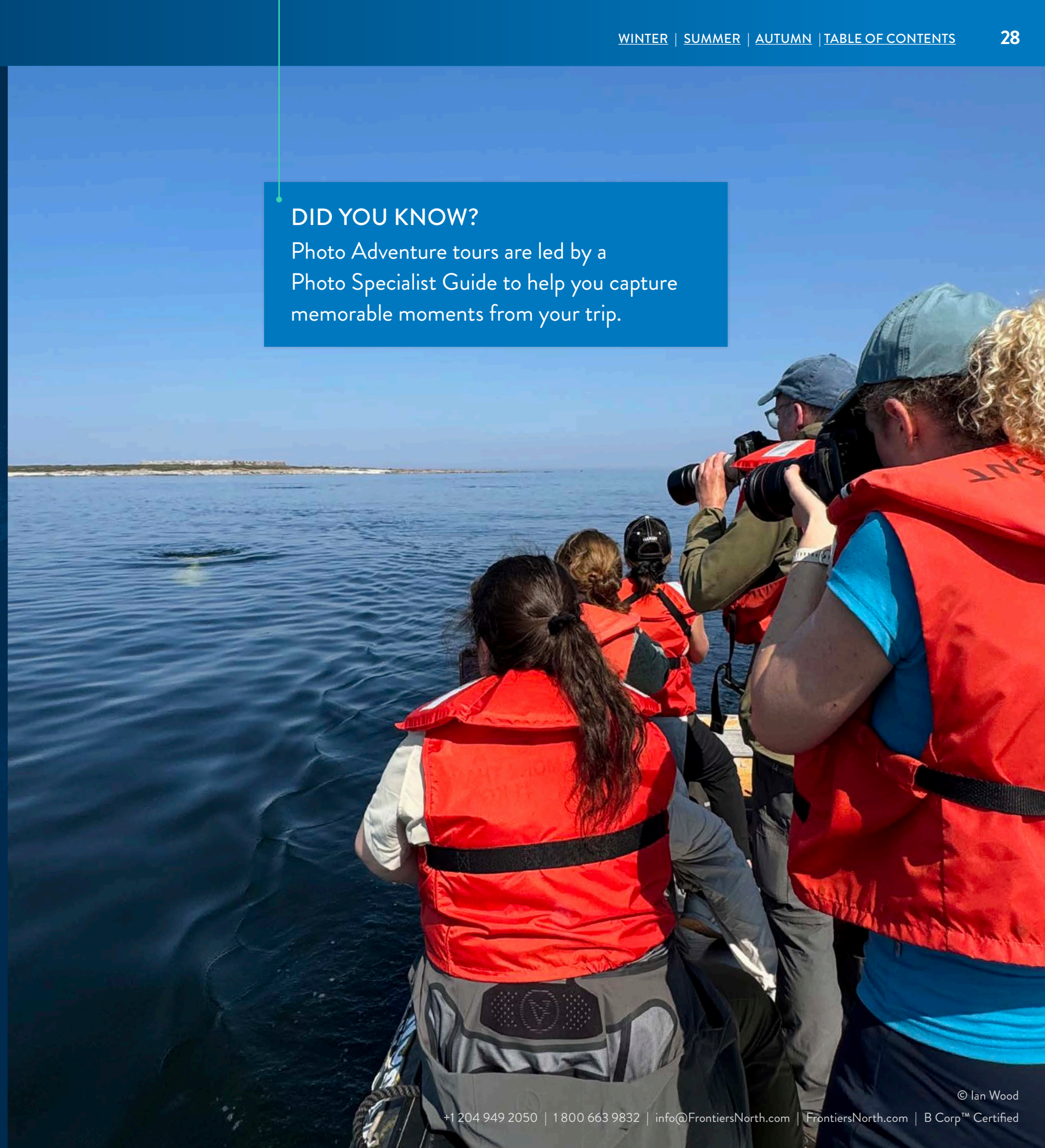
Group Size:

- Intimate groups of **up to 18** like-minded travellers

Itinerary Activities: Beluga & Fort Tour, Beluga Zodiac, Churchill & Area Photo Tour, Coastal Hike, Cultural Presentation, Dog Carting, Itsanitaq Museum, Parks Canada Visitor Centre, Photo Tour, Photo Workshop, Polar Bears International House, Rocket Range, Tundra Buggy® Adventure.

DID YOU KNOW?

Photo Adventure tours are led by a Photo Specialist Guide to help you capture memorable moments from your trip.





Conservation Journey®: Beluga Whales

JULY - AUGUST
INTERPRETIVE GUIDED

This exclusive beluga whale tour combines immersive education and adventure creating a unique opportunity to experience Churchill's coastal waters and engage with an experienced marine expert. Come face-to-face with beluga whales in their natural habitat and learn about beluga whale biology, conservation, and ocean health. This adventure is specially designed to provide you with an in-depth experience and memorable opportunity to learn about beluga whales and engage with a marine species expert.

WHAT IS INCLUDED

Guide:

- An experienced interpretive guide
- A conservation researcher

Accommodations:

- 2 nights at Winnipeg hotel
- 4 nights at Churchill hotel

Meals:

- All Meals: *B* (4), *L* (4), *D* (5)
- Additional refreshments throughout your adventure

Gratuities:

- All gratuities included

Transportation:

- Round-trip airfare (*Winnipeg to Churchill*)
- All ground transportation

Wildlife/Permitting:

- Access to all viewing locations

Group Size:

- Intimate groups of **up to 18** like-minded travellers

Itinerary Activities: Assiniboine Park Conservancy, Beluga Boat Tour, Beluga & Fort Tour, Beluga Kayaking, Beluga Zodiac, Churchill & Area Tour, Churchill Northern Studies Centre, Coastal Hike, Cultural Presentation, Dog Carting, Itsanitaq Museum, Parks Canada Visitor Centre, Polar Bears International House, Tundra Buggy® Adventure.

DID YOU KNOW?



Partial proceeds from Conservation Journey®: Beluga Whales will support Raincoast Conservation, a Canadian ocean conservation organization.

Dr. Jaclyn Aubin, Beluga Whale Conservation Researcher, joins Conservation Journey® guests aboard a Zodiac.





Canada's Big Five Safari

JULY - AUGUST
INTERPRETIVE GUIDED

Our one-of-a-kind Big Five Safari is a salute to the incredible array of wildlife that populate the forests, prairies, and northern tundra of Manitoba. From Winnipeg, travel to Riding Mountain National Park to seek out moose, black bears, and a wild bison herd amid lush meadows and thick forest treelines. Next, fly north to Churchill's Northern coastline to witness inquisitive beluga whales and explore the vast Churchill Wildlife Management Area for a summer polar bear.

WHAT IS INCLUDED

Guide:

- An experienced interpretive guide

Accommodations:

- 3 nights at Winnipeg hotel
- 2 nights at Riding Mountain hotel
- 3 nights at Churchill hotel

Meals:

- All Meals: *B (4), L (4), D (5)*
- Additional refreshments throughout your adventure

Gratuities:

- All gratuities included

Transportation:

- Round-trip airfare (*Winnipeg to Churchill*)
- Round-trip ground transfers (*Winnipeg to Riding Mountain*)
- All ground transportation

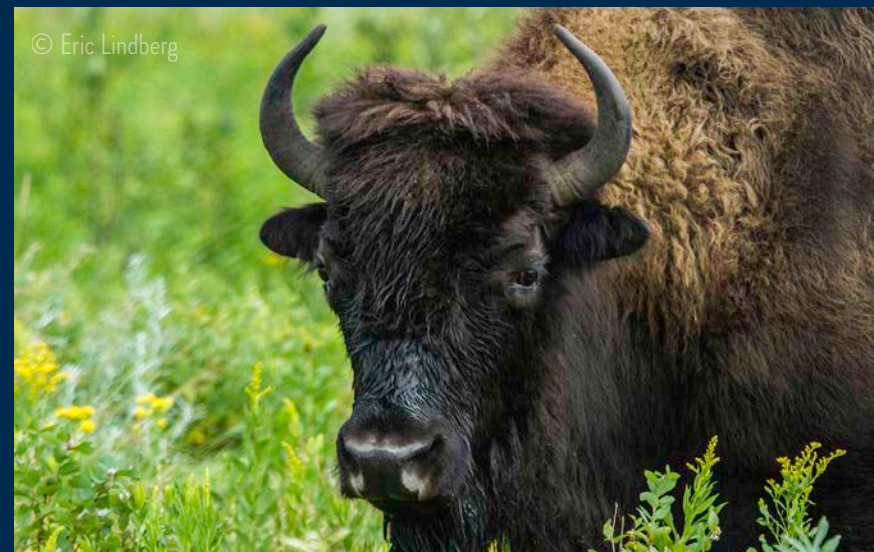
Wildlife/Permitting:

- Access to all viewing locations

Group Size:

- Intimate groups of **up to 18** like-minded travellers

Itinerary Activities: Beluga & Fort Tour, Beluga Boat Tour, Beluga Kayaking, Beluga Zodiac, Bison Enclosure, Brewery Tour, Churchill & Area Tour, Cultural Presentation, Dog Carting, Interpretive Hike, Interpretive Walking Tour, Itsanitaq Museum, Parks Canada Visitor Centre, Polar Bears International House, Tundra Buggy® Adventure, Wildlife Drive.



DID YOU KNOW?

This adventure offers the most variety for wildlife viewing and the widest range of travel visiting Riding Mountain National Park to seek out: moose, black bears and bison, before making your way to Churchill to look for polar bears and beluga whales.

Autumn

POLAR BEARS

TRAVEL MONTHS: OCTOBER AND NOVEMBER

STAYING IN CHURCHILL

| | |
|---|----|
| CLASSIC CHURCHILL POLAR BEAR ADVENTURE | 33 |
| CLASSIC CHURCHILL POLAR BEAR ADVENTURE BY TRAIN | 34 |
| SUBARCTIC DISCOVERY: CHURCHILL POLAR BEARS | 35 |

STAYING AT THE TUNDRA BUGGY LODGE

| | |
|--|----|
| TUNDRA BUGGY LODGE: POLAR BEARS | 36 |
| TUNDRA BUGGY LODGE: TOWN & POLAR BEARS | 37 |
| PHOTO ADVENTURE: TUNDRA BUGGY LODGE | 38 |
| CONSERVATION JOURNEY®: POLAR BEARS | 39 |



Autumn

IN CHURCHILL

Autumn is all about the polar bears in Churchill. In October, witness autumn's beautiful tundra colours or visit in November to see the Hudson Bay coast draped in ice and snow.

Our polar bear tours offer guests the safest and best way to view polar bears and other subarctic wildlife in their natural habitat. Guests travelling to Churchill can choose between private hotel rooms or unique accommodations at the Tundra Buggy Lodge situated directly on the tundra. Guests can also enjoy cultural components such as dog sledding and visiting museums.

MEANINGFUL AUTUMN MOMENTS

- Lock eyes with wild polar bears from the comfort of a Tundra Buggy.
- Immerse yourself in the lifestyle that is experienced daily by locals in the Polar Bear Capital of the World.
- Choose a tour at the Tundra Buggy Lodge and wake up to subarctic wildlife outside your window.
- Learn about conservation and polar bear research from a Polar Bears International species expert.





Classic Churchill Polar Bear Adventure

OCTOBER - NOVEMBER
INTERPRETIVE GUIDED

This hotel-based adventure offers the excitement of polar bear viewing from a Tundra Buggy® and the opportunity to take in the endless charm of this remote Canadian community. Experience life in the Polar Bear Capital of the world indulging in history and culture, regional cuisine, and enjoy two full days on a Tundra Buggy® in the Churchill Wildlife Management Area, where you will have plenty of opportunity to explore the tundra for polar bears and other subarctic wildlife in their natural environment.

WHAT IS INCLUDED

Guide:

- An experienced interpretive guide

Accommodations:

- 2 nights at Winnipeg hotel
- 3 nights at Churchill hotel

Meals:

- All Meals: B (4), L (4), D (5)
- Additional refreshments throughout your adventure

Gratuities:

- All gratuities included

Transportation:

- Round-trip airfare (Winnipeg to Churchill)
- All ground transportation

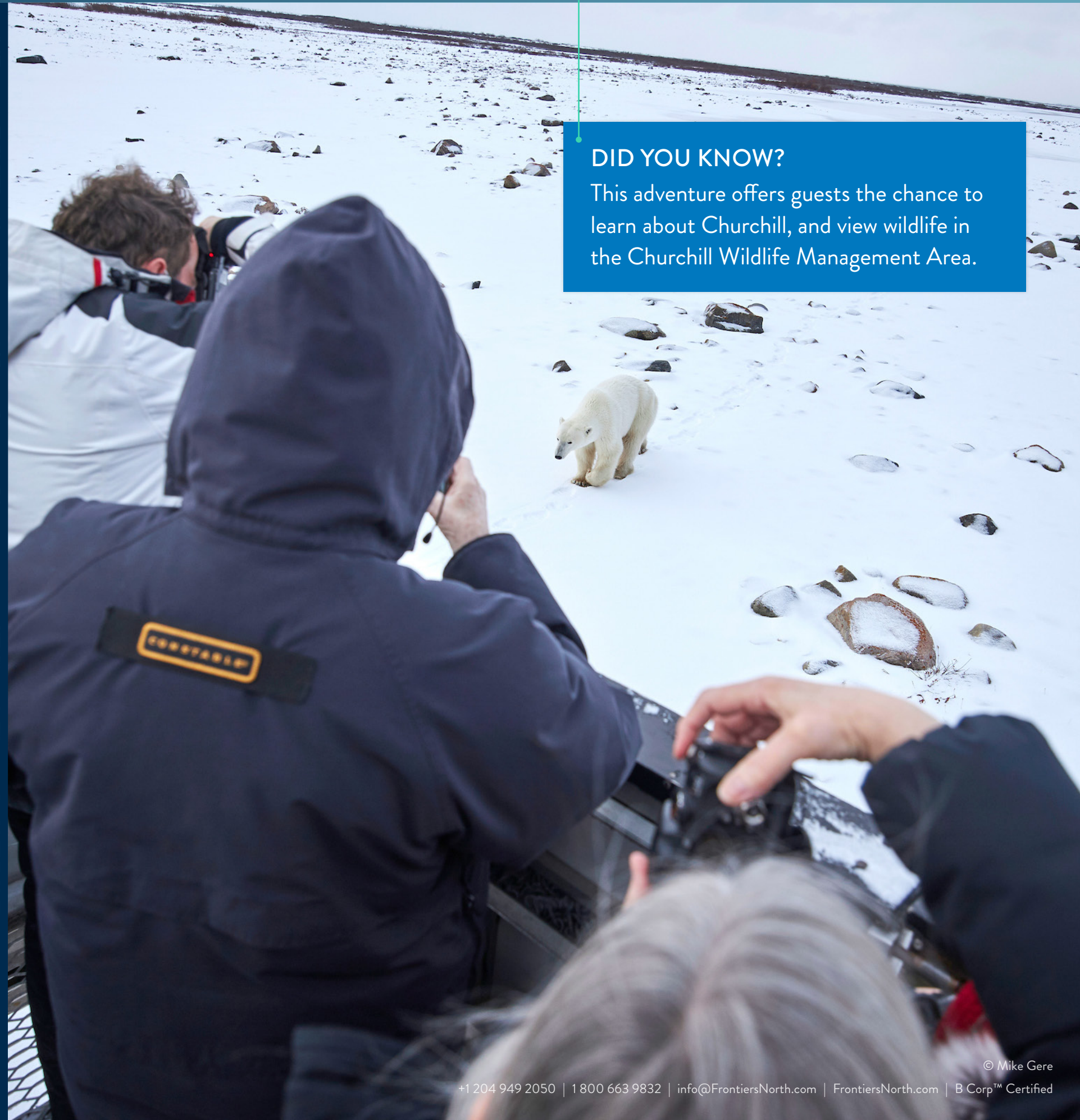
Wildlife/Permitting:

- Access to all viewing locations

Group Size:

- Intimate groups of **up to 22** like-minded travellers

Itinerary Activities: Churchill & Area Tour, Cultural Presentation, Dog Sledding, Itsanitaq Museum, Parks Canada Visitor Centre, Polar Bears International House, Tundra Buggy® Adventure.



DID YOU KNOW?

This adventure offers guests the chance to learn about Churchill, and view wildlife in the Churchill Wildlife Management Area.



Classic Churchill Polar Bear Adventure by Train

OCTOBER - NOVEMBER
INTERPRETIVE GUIDED

Travel to the Polar Bear Capital of the World by train and witness the changing landscape on your journey north. This hotel-based adventure offers the excitement of polar bear viewing from a Tundra Buggy® and the opportunity to take in the endless charm of this remote Canadian community. Indulge in Churchill's history and culture, regional cuisine, and enjoy two full days on a Tundra Buggy® in the Churchill Wildlife Management Area, with plenty of opportunity to explore the tundra for polar bears and other wildlife.

WHAT IS INCLUDED

Guide:

- An experienced interpretive guide

Accommodations:

- 2 nights at Winnipeg hotel
- 2 nights on the Train
- 3 nights at Churchill hotel

Meals:

- All Meals: *B (4), L (4), D (5)*
- Additional refreshments throughout your adventure

Gratuities:

- All gratuities included

Transportation:

- Round-trip airfare (*Winnipeg to Churchill*)
- All ground transportation

Wildlife/Permitting:

- Access to all viewing locations

Group Size:

- Intimate groups of **up to 20** like-minded travellers

Itinerary Activities: Churchill & Area Tour, Cultural Presentation, Dog Sledding, Itsanitaq Museum, Parks Canada Visitor Centre, Polar Bears International House, Tundra Buggy® Adventure.



DID YOU KNOW?

You can travel by train and witness the changing landscape on your journey north to the Polar Bear Capital of the World!



Subarctic Discovery: Churchill Polar Bears

OCTOBER - NOVEMBER
INTERPRETIVE GUIDED

Our shortest multi day polar bear tour, with a focus on viewing wild polar bears, and experiencing the remote town of Churchill. This hotel-based adventure offers the excitement of polar bear viewing from a Tundra Buggy® and the opportunity to witness the charm of this remote Canadian community. This trip includes two full Tundra Buggy® days in the Churchill Wildlife Management Area, where polar bears await the freezing of the Hudson Bay. While in town, learn about the history and indulge in the culture by exploring cultural museums, unique shops, and local restaurants boasting delicious regional cuisine.

WHAT IS INCLUDED

Guide:

- An experienced interpretive guide

Accommodations:

- 2 nights at Winnipeg hotel
- 2 nights at Churchill hotel

Meals:

- All Meals: B (4), L (4), D (5)
- Additional refreshments throughout your adventure

Gratuities:

- All gratuities included

Transportation:

- Round-trip airfare (Winnipeg to Churchill)
- All ground transportation

Wildlife/Permitting:

- Access to all viewing locations

Group Size:

- Intimate groups of **up to 22** like-minded travellers

Itinerary Activities: Churchill & Area Tour, Cultural Presentation, Parks Canada Visitor Centre, Polar Bears International House, Tundra Buggy® Adventure.



DID YOU KNOW?

This is our shortest and most compact tour packed with polar bears, adventure, and Churchill's remote town charm.



Tundra Buggy Lodge: Polar Bears

OCTOBER - NOVEMBER
INTERPRETIVE GUIDED

Staying at the premium accommodation to view wild polar bears, located at Polar Bear Point, nestled in the heart of the Churchill Wildlife Management Area. This remote lodge offers endless opportunities for polar bear viewing, with its own culinary team, you will literally never leave the tundra. This adventure gives you the chance to eat and sleep with a bear right outside your window. Spend your days exploring the surrounding subarctic for wildlife on a Tundra Buggy®, and unwind in the evening after enjoying regionally inspired dining in our lounge, with a rooftop observation deck for wildlife and northern lights.

WHAT IS INCLUDED

Guide:

- An experienced interpretive guide

Accommodations:

- 2 nights at Winnipeg hotel
- 3 nights at Tundra Buggy Lodge

Meals:

- All Meals: B (4), L (4), D (5)
- Additional refreshments throughout your adventure

Gratuities:

- All gratuities included

Premium Gear:

- Canada Goose Parka & Pants
- Baffin Boots

Transportation:

- Round-trip airfare (Winnipeg to Churchill)
- All ground transportation

Wildlife/Permitting:

- Access to all viewing locations

Group Size:

- Intimate groups of up to 20 like-minded travellers

Itinerary Activities: Churchill & Area Tour, Cultural Presentation, Tundra Buggy® Adventure.

→ *Want a shorter Adventure?*

Inquire about our 2-Night stay adventure at the Tundra Buggy Lodge!



Certified
Corporation



DID YOU KNOW?

The Tundra Buggy Lodge offers endless opportunities for polar bear viewing, day and night, with the chance to wake up to a wild polar bear right outside your window.



Tundra Buggy Lodge: Town & Polar Bears

OCTOBER - NOVEMBER
INTERPRETIVE GUIDED

Get the best of both worlds on this polar bear tour that offers the opportunity to stay in the town of Churchill and at the Tundra Buggy Lodge. In town, experience the local charm, visit historic museums, and dine on regional fare. Then, travel to our remote wildlife lodge at Polar Bear Point to stay in the heart of the tundra, where polar bear viewing opportunities are endless. Spend your days exploring the surrounding subarctic for wildlife viewing opportunities from a Tundra Buggy® and your evenings enjoying exclusive expert presentations.

WHAT IS INCLUDED

Guide:

- An experienced interpretive guide

Accommodations:

- 2 nights at Winnipeg hotel
- 1 night at Churchill hotel
- 3 nights at Tundra Buggy Lodge

Meals:

- All Meals: B (4), L (4), D (5)
- Additional refreshments throughout your adventure

Gratuities:

- All gratuities included

Premium Gear:

- Canada Goose Parka & Pants
- Baffin Boots

Transportation:

- Round-trip airfare (Winnipeg to Churchill)
- All ground transportation

Wildlife/Permitting:

- Access to all viewing locations

Group Size:

- Intimate groups of up to 20 like-minded travellers

Itinerary Activities: Churchill & Area Tour, Cultural Presentation, Dog Sledding, Itsanitaq Museum, Parks Canada Visitor Centre, Tundra Buggy® Adventure.



DID YOU KNOW?

This tour provides both experiences of staying in town, and at the Tundra Buggy Lodge where you can wake up to a polar bear right outside your window.



Photo Adventure: Polar Bears at Tundra Buggy Lodge

OCTOBER - NOVEMBER
PHOTO SPECIALIST GUIDED

Immerse yourself in the spectacular subarctic wilderness and scenery at Frontiers North's Tundra Buggy Lodge, located at Polar Bear Point in the heart of the Churchill Wildlife Management Area. This lodge-based adventure offers the most time of any tour with wild polar bears in their natural habitat. Enhance your photography skills with workshops and guidance from our expert Photo Specialist Guides. Return to the lodge each evening for regional cuisine prepared by an exclusive culinary team, a species expert presentation, and even a chance to capture the northern lights from the rooftop observation deck.

WHAT IS INCLUDED

Guide:

- An experienced photo specialist guide

Accommodations:

- 2 nights at Winnipeg hotel
- 1 night at Churchill hotel
- 3 nights at Tundra Buggy Lodge

Meals:

- All Meals: B (4), L (4), D (5)
- Additional refreshments throughout your adventure

Gratuities:

- All gratuities included

Premium Gear:

- Canada Goose Parka & Pants
- Baffin Boots

Transportation:

- Round-trip airfare (Winnipeg to Churchill)
- All ground transportation

Wildlife/Permitting:

- Access to all viewing locations

Group Size:

- Intimate groups of **up to 20** like-minded travellers

Itinerary Activities: Churchill & Area Photo Tour, Cultural Presentation, Photo Workshop, Tundra Buggy® Adventure.

DID YOU KNOW?

A Photo Specialist Guide is included with our Photo Adventure tours to help you capture your most memorable moments.





Conservation Journey®: Polar Bears

OCTOBER - NOVEMBER
INTERPRETIVE GUIDED

This exclusive polar bear tour combines education and adventure to creating a unique opportunity to experience the heart of polar bear country with a Polar Bears International scientist. Witness polar bears in their natural habitat, learn about conservation and awareness, and go behind the scenes on Tundra Buggy® One (a mobile broadcast and research station and operations centre for our polar bear cams broadcasted live at explore.org). This tour includes time on the tundra, and evenings at the Tundra Buggy Lodge learning about how we can work together to help save polar bear habitat.

WHAT IS INCLUDED

Guide:

- An experienced interpretive guide
- A conservation researcher

Accommodations:

- 2 nights at Winnipeg hotel
- 1 night at Churchill hotel
- 3 nights at Tundra Buggy Lodge

Meals:

- All Meals: B (4), L (4), D (5)
- Additional refreshments throughout your adventure

Gratuities:

- All gratuities included

Premium Gear:

- Canada Goose Parka & Pants
- Baffin Boots

Transportation:

- Round-trip airfare (Winnipeg to Churchill)
- All ground transportation

Wildlife/Permitting:

- Access to all viewing locations

Group Size:

- Intimate groups of **up to 20** like-minded travellers

Itinerary Activities: Churchill & Area Tour, Cultural Presentation, Dog Sledding, Itsanitaq Museum, Parks Canada Visitor Centre, Polar Bears International House, Tundra Buggy® Adventure.



Corporation



DID YOU KNOW?



A portion of the proceeds of this trip will be provided to Polar Bears International in support of their programs and conservation efforts.

Polar Bears International species expert demonstration on a Tundra Buggy Adventure.

A Letter FROM THE CEO



Our Frontiers North Adventures team talks a lot about our company's purpose, which is to share in the stewardship of the communities and environments in which we operate. We work to achieve that purpose through tourism.

We also think a lot about how we can provide you – our valued guests – with transformative travel experiences. Included in guests self-reporting having had transformative travel experiences are things like engaging with trusted messengers (connecting with local folks in addition to your lead guide or scientist) and experiencing disorienting dilemmas (being nudged outside of your comfort zones to consider ideas from different or new perspectives). Our entire team works hard to deliver these and other transformative elements on your trip with us.

In addition to inspiring you in Churchill as we dine beneath the northern lights, drift amongst beluga whales, and lock eyes with wild polar bears, we have a responsibility together to confront difficult realities. For example, how a changing climate is impacting polar bears, as well as our respective roles in Indigenous reconciliation and dealing with the scar tissue present as a result of colonialism. Heavy stuff on your 'trip of a lifetime', but we think you're up for it.

The idea here is that your time with us is meaningful. As opposed to just another

notch on your travel belt, we want your experience with us in Churchill to represent an inflection point in your life; that over time you can look back and say, "Wow... that trip really affected me."

A handwritten signature in white ink, appearing to read "John Gunter". The signature is fluid and cursive, with a large initial "J" and "G".

John Gunter, President and CEO
Frontiers North Adventures